



Term: Autumn | Date: Friday 14th November 2025 | Issue 09

### Notices and Reminders

- Thank you to everyone who donated and participated in Children in Need. We have sent £130 to the charity.
- Nursery will close at **5pm** on Tuesday 23rd December to give our staff an opportunity for some last minute shopping. We are usually closed well before the 23rd but wanted to stay open longer for working parents so we hope you will appreciate this slightly early close for our staff.
- We are not doing an official Christmas production this year as we don't have the space to do it, but we are hoping to put together some little videos for you to upload to Blossom

### What we did this week

This week our celebration was Birthdays. We discussed birthdays with the children and if they knew when theirs was. In pre-school we did an activity which involves walking around our globe 3 or 4 times depending upon the child's age to represent how long they have been on the earth.

Children made party hats and we had balloons. We talked about the giving and receiving of gifts. Zoe made us a lovely party tea too.



### TASTE OF THE WEEK

The children tasted lemon and lime jelly with fruit as our taste of the week linked to our party theme and party foods.



### Montessori

A Montessori birthday walk is a celebration where a child walks around a candle or symbol of the sun, carrying a globe or representation of the Earth, for one full lap for each year of their life. Between each lap, a story or milestone from that year is shared, and the activity helps children grasp the passage of time, the relationship between Earth and sun, and their own growth and development. The ceremony can include a song about the Earth going around the sun



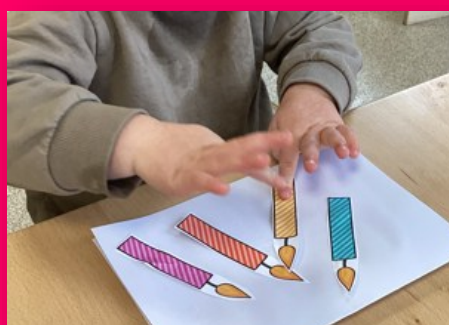
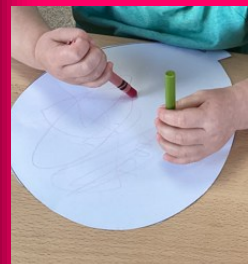
## LITTLE EXPLORERS

Our Little Explorers wore party hats this week, explored some new toys and had a pretend party tea with playdough and foam.



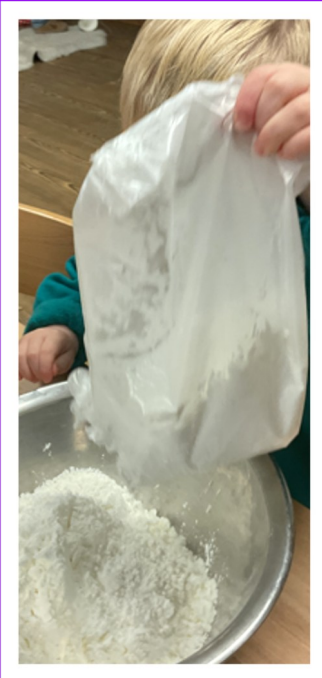
## LITTLE DISCOVERERS

Discoverers explored all things birthdays this week.



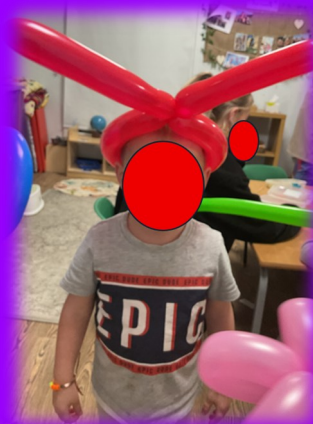
## LITTLE WANDERERS

Wanderers got involved in birthday cards, presents and baking this week. They also wore party hats.



## LITTLE VOYAGERS

Voyagers explored the Montessori birthday walk, creating cards, cakes, making balloon animals and cards for friends and family. We sang a lot too.



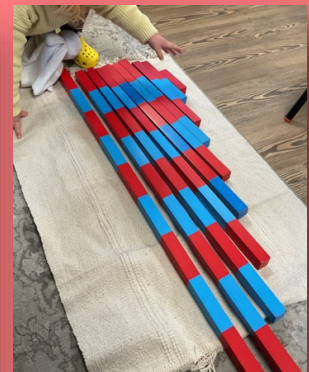
## **ANNA'S BAKING**

Uzma join in with Anna and the children this week to make birthday cakes and Anna created lemon and lime jelly with fruit for a party tea.



## **MONTESSORI IN ACTION**

There has been some fantastic Montessori in action this week in the Voyagers room.





## Themes and activities that we will be focusing on next week



### Explorers & Discoverers

Next week our celebration is Hannukah. We will explore some stories, pictures, tuff trays, candles and songs relating to this celebration.



### EMPLOYEE OF THE MONTH.

Congratulations to Jess Guy and Lisa Fell from our Explorers baby room.

Both Jess and Lisa do an amazing job of

running our baby room, The

Explorers and

have recently put a lot of effort into making it such a wonderful space.

Well done both.



### Wanderers / Voyagers

We will also explore Hannukah. We will play with Dreidl's and learn a song to go with it. We will explore a real Menorrah and watch video clips explaining the celebration to us.

### PRIMARY SCHOOL APPLICATIONS 2026

[Apply for a primary school \(leeds.gov.uk\)](https://leeds.gov.uk)

#### Who can apply

Children born between 1 September 2021 and 31 August 2022 are due to start primary school in September 2026.

#### How to apply

You can apply from 1 November 2025. The deadline to apply is 15 January 2026.

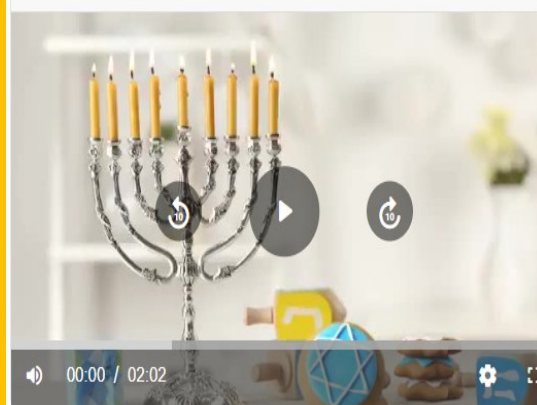
##### ► Applications submitted after the deadline

We send out letters reminding parents to apply at the end of October. You can still apply if you do not get a letter.

We recommend choosing five schools to give your child the best chance of getting a place at a school you prefer.

[Apply for a primary school](#)

Sparkle and shine video



Little Adventurers  
Montessori



#### Contact Details

Tel: 07546 347489

Email: Angela Euesden (Nursery Manager)

[angela@lamontessori.org](mailto:angela@lamontessori.org)

Leah Schofield (Co-Owner)

[leah@lamontessori.org](mailto:leah@lamontessori.org)

Mollie Newbould (Deputy Manager)

[admin@lamontessori.org](mailto:admin@lamontessori.org)

#### Opening Hours

Monday to Friday

8.00am - 6:00pm